

# FIH FIELD CERTIFICATION

## WHAT IT INVOLVES...



FIH Congress and Hockey India Facilities Workshop

New Delhi, India

1-2-3 November 2018



## Acousto-Scan Pty Ltd

44/59 Halstead street, South Hurstville, NSW 2221  
 Sydney, Australia

- Established in **1993** – 25 years old laboratory
- **ISO 17025** / NATA international laboratories
- 6 persons in **Australia** + 5 in **Asia** & worldwide
- Asian Operations from Bangkok since 2014



## Acousto Scan India Pvt Ltd



- Regus Level-1, Redfort Capital, Parsvnath Towers, Gole Market, Delhi-110001, India.
- Operate since **2017**
- Tested more than 50 FIH fields in INDIA
- First **FIH Global Elite** In India at INA Ezhimala
- First **FIH 5S** in Agra at Eklavya Sports Stadium
- And many more...





➤ ACOUSTOSCAN

## References *(over 300 certifications...)*

Beijing Olympics Stadium – Bird Nest 2008

Youth Olympic Stadium – Singapore 2010

Youth Olympic Games – Buenos Aires 2018

IAAF World Championships – Daegu 2011

South East Asian Games – Singapore 2015

South Asian Games – Guwahati 2016

South East Asian Games – Bukit Jalil 2017

PON Games – Bandung 2016

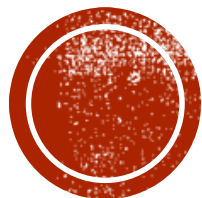
Asian Games – Jakarta and Palembang 2018

*And all over the world !!!*



*Rungrado May Day Stadium  
Pyongyang, DPR North Korea  
114,000 seats  
Largest stadium in the world!*





# FIH QUALITY PROGRAMME FOR HOCKEY TURF

<http://www.fih.ch/inside-fih/fih-quality-programme-for-hockey-turf/>



Class of Hockey Turf	Global Elite Field	Global Field	National Field		Multi-Sport Field		
	Global	Global	National Class 1	National Class 2	Category 1 Multi-Sport Class 1	Category 2 Multi-Sport Class 2	Category 3 Multi-Sport Class 3
FIH Tier 1 International Competitions	✓						
Other International Competitions Top level Continental Competitions Top level National Club Competitions Top level University & College Competitions	✓	✓					
International Development Competitions Continental Competitions National Club Competitions Regional Club Competitions University & College Competitions Community Club Competitions Schools Competitions			✓	✓			
Community & School Hockey Field also used for sports such as small sided football, futsal etc.				✓	✓		
Community & School Hockey Field also used for sports such as tennis						✓	
Community & Basic Development Hockey Field designed for football with hockey as a secondary sport							✓

# TIER LEVELS



- **Two years** certification (Global, National and Multi-Sport: 3 years)
- The field must be **irrigated** (sprinklers system) – using GLOBAL product
- Compulsory **run-offs size**: end run-offs  $\geq 5.0$  m and side run-offs  $\geq 3.0$  m
- Minimum **operational zone** (camera) of 1m wide.
- Longitudinal gradient  $\leq 0.2\%$  and lateral gradient  $\leq 0.4\%$  and symmetrical
- **North/South alignment** with a maximum deviation of 15%
- Require a **FIH Quality Programme logo** within the run-offs
- **Fencing**: Side  $\geq 1.0$  m + Ends Mesh  $\geq 3.0$  m with a suspended net  $\geq 7.0$  m
- **Sports Equipment** (goal with side and back boards, corner flags) mandatory
- **Maintenance Equipment** and movable hoses on-site + records in maintenance log
- **Technical Officials' table** (minimum 6m wide by 3m deep centered on halfway line)
- **Two team benches**, providing seating for 11 people with water supply and power

## GLOBAL ELITE

### Elite checklist





**GLOBAL ELITE**

**FIH Quality  
Logo**

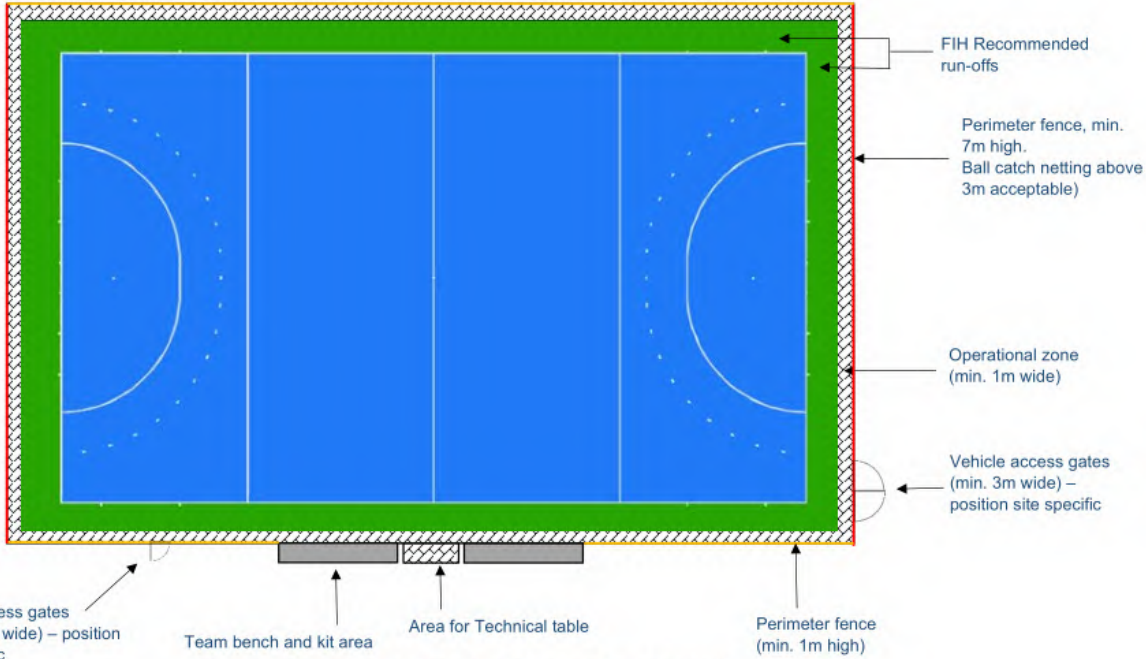






**GLOBAL ELITE**  
Players cabin  
Technical Table



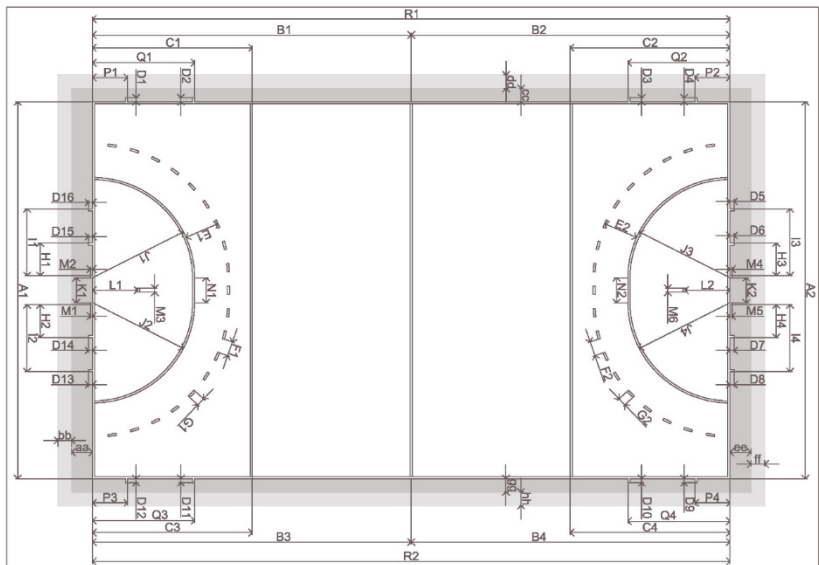
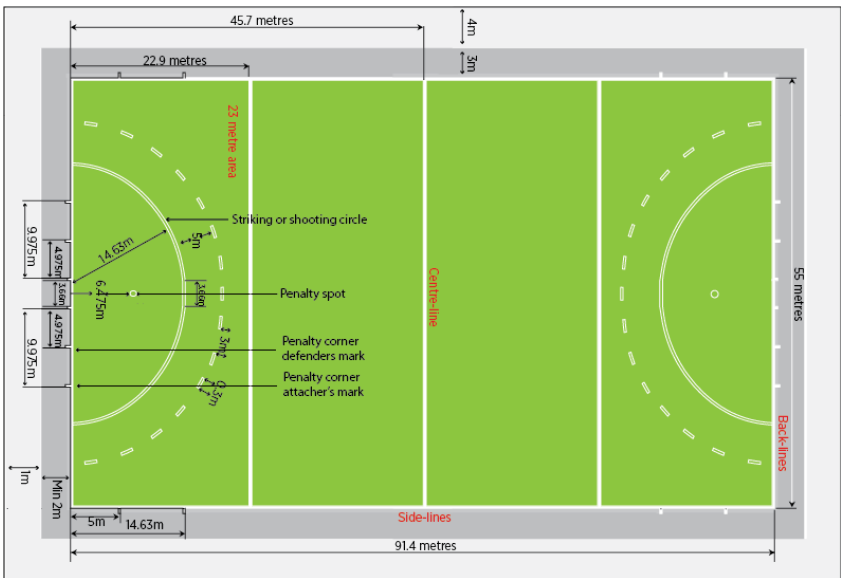


Global Elite Hockey Field – Conceptual Layout

# GLOBAL ELITE

## Operational zone





Distance (m)	Tolerance	Ref.
55.00	± 50 mm	A1
45.70	± 50 mm	B1
		B3
22.90	± 50 mm	C1
		C3
0.30	± 30 mm	D1
		D3
5.00	± 30 mm	E1
3.00	± 50 mm	F1
0.30	± 30 mm	G1
		H1
4.975	± 50 mm	H3
		I1
9.975	± 50 mm	I3
		J1
14.63	± 30 mm	J1
14.63	± 30 mm	J3
3.66	± 50 mm	K1
6.475	± 30 mm	L1
0.15	± 30 mm	M1
3.66	± 50 mm	N1
14.63	± 50 mm	P1
14.63	± 50 mm	P3
91.40	± 50 mm	Q1

# DIMENSIONS

Length 91.40

Width 55.00

Quarter 22.90 Middle 45.70

Shooting circle 14.63

Penalty 6.475

Line widths (75 ± 10mm)

Tolerances

50 mm (lengths)

30 mm (otherwise)





- **Logo in the Field of Play**
  - Not authorized in Global Elite
  - Permitted but may exclude field from Competition



- **Other lines markings**
  - White lines only for Elite
  - Permitted (UV tested)



- **5m broken lines outside shooting circles**
  - Mandatory for Global Elite
  - Optional for other Tiers



## LINE MARKING

Logo

Other markings

Dashes





# TEST POSITIONS

Shock Absorption

Vertical Deformation

Energy Restitution

Shoe-Surface Friction

Ball Rebound

Ball roll + Deviations

Field irrigation

Surface Regularity

Field gradients

